



Moderator's Guide

Addendum for Elluminate *Live!* V9.6

© 2001 -2009 Elluminate, Inc.
All Rights Reserved.



Trademarks

Java, Java Runtime Environment, Java Web Start, Solaris and the Solaris logo are trademarks or registered trademarks of Sun Microsystems, Inc. in the U.S. or other countries.

Windows, Vista and PowerPoint are trademarks of Microsoft Corporation.

Mac, Macintosh, the Mac logo and OS X are trademarks of Apple Inc., registered in the U.S. and other countries.

SPARC and UltraSPARC are registered trademarks of SPARC International, Inc.

openSUSE is a trademark of Novell, Inc.

Red Hat Enterprise Linux is a trademark of Red Hat, Inc.

Ubuntu is a registered trademark of Canonical Ltd.

Tux, the Linux logo, was created by Larry Ewing using the GNU Image Manipulation Program (GIMP) and generously provided freely to the Linux community.

OpenOffice.org is a trademark held by Team OpenOffice.org e.V. on behalf of OpenOffice.org.

All other brand or product names are trademarks or registered trademarks of their respective companies or organizations.

Copyright

No part of this document may be reproduced or transmitted in any form by any means, electronic or mechanical, including photocopy, recording or using any information retrieval system, without prior written permission. This document contains confidential proprietary information and is protected by law. This document and the information contained in it are intended for the original recipient(s) only. Any dissemination or distribution of the document without prior written permission is strictly prohibited.

Illuminate[®], Illuminate Live![®] and the Illuminate light bulb image and fonts are registered trademarks of Illuminate, Inc., all rights reserved.

Illuminate Plan![™] is a trademark of Illuminate, Inc., all rights reserved.

© 2009 Illuminate, Inc. All Rights Reserved.



Contents

Preface ii

Who should read this guide.....	ii
Conventions used in this guide	ii
Operating System Differences	ii
Notes	ii
Typographical conventions.....	iii
Getting Help.....	iii

Chapter 1 Changes to Elluminate *Live!* 1

Elluminate <i>Live!</i> Client Requirements	1
New Functions	1
New Wireless Connection Speed.....	1
New Color Indicator for Unapplied Preferences	2
Changed Feature	3
Clip Art Library Tab.....	3

Preface

Who should read this guide

This guide is written for Elluminate *Live!*[®] users wanting to learn about the new or changed features in Elluminate *Live!* V9.6.

Conventions used in this guide

Operating System Differences


This guide is written for Elluminate *Live!* users on all supported operating systems: Windows, Mac OS X, Linux and Solaris.

Screen Captures


The screen captures shown in this guide were taken in a Windows environment. If you are running Elluminate *Live!* on a Mac, Solaris or Linux platform, the appearance of windows, dialog boxes, etc. will differ slightly from those shown in this guide.

Notes

Three types of notes are used in this guide to highlight information:

 This is a note. Notes of this format are used to highlight important information or to present asides relevant to the topic at hand.

 This is a tip. Tips provide helpful information on how to most effectively use a particular function in Elluminate *Live!*

 This is a caution. Cautions alert you to potentially confusing terminology or difficulties that may occur when using Elluminate *Live!*



Typographical conventions

Convention	Description
1. Number	Used to indicate a step in a task.
✓ Checkmark	Used for listing the different options available to you to complete a task or function. Pick one only.
Bold	Used to highlight clickable interface elements (such as buttons or tabs) or to give emphasis to a word.
<i>Italics</i>	Used to highlight options or parameters. Also used for cross references to other sections in this guide or to other guides.
<u>Underline</u>	Used to indicate links, such as links to websites.
Monospace	Used to highlight pathnames, filenames and folders.

Getting Help

Elluminate *Live!* help is available via the following links:

- Training and Documentation for Elluminate *Live!* (including Moderators' Guide):
<http://www.illuminate.com/training>
- Elluminate Support:
Website: <http://www.illuminate.com/support>
Portal: <http://support.illuminate.com>

This page intentionally left blank.



Chapter 1 Changes to Illuminate Live!

Two new client operating systems are now supported, two new functions have been added and one existing feature has been changed with the release of Illuminate Live! V9.6.

Illuminate Live! Client Requirements

Windows 7 (32 bit)¹ and Mac OS X 10.6 can now be used as clients for conducting Illuminate Live! sessions. The complete list of supported clients is as follows:

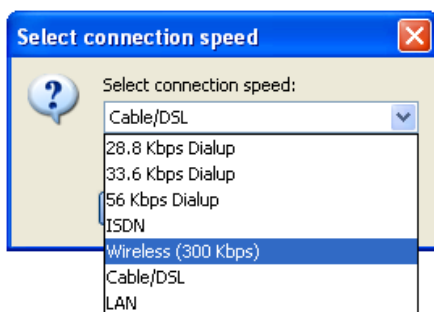
- Windows XP (32 bit), Vista (32 or 64 bit) or Windows 7 (32 bit)
- Mac OS X 10.5 or 10.6
- Solaris 10 (SPARC only)
- openSUSE 11 (64 bit) or Ubuntu 8.10 (64 bit)

New Functions

New Wireless Connection Speed

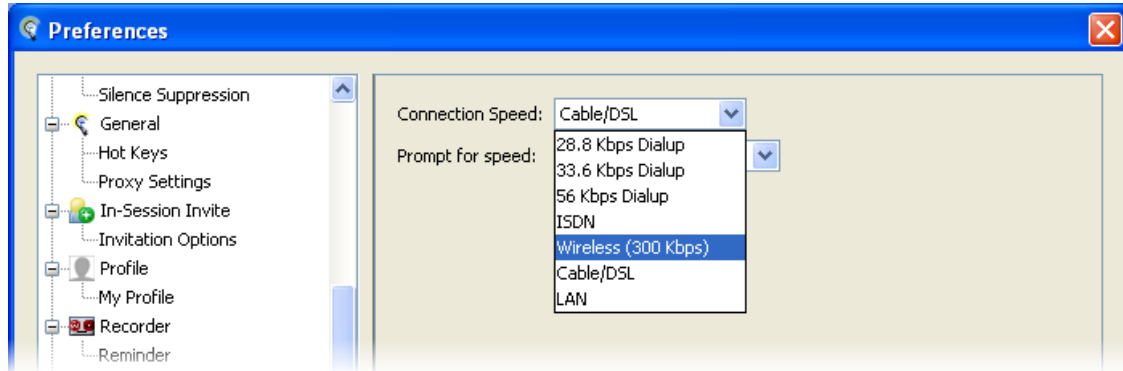
A new connection speed for wireless connections is now available.

You can set your connection speed in the Select Connection Speed dialog when joining a session.



¹ Windows 7 users will require Elevated Privileges for Application Sharing, just as Vista users do.

Or you can select your connection speed using the Session Connection preferences dialog.



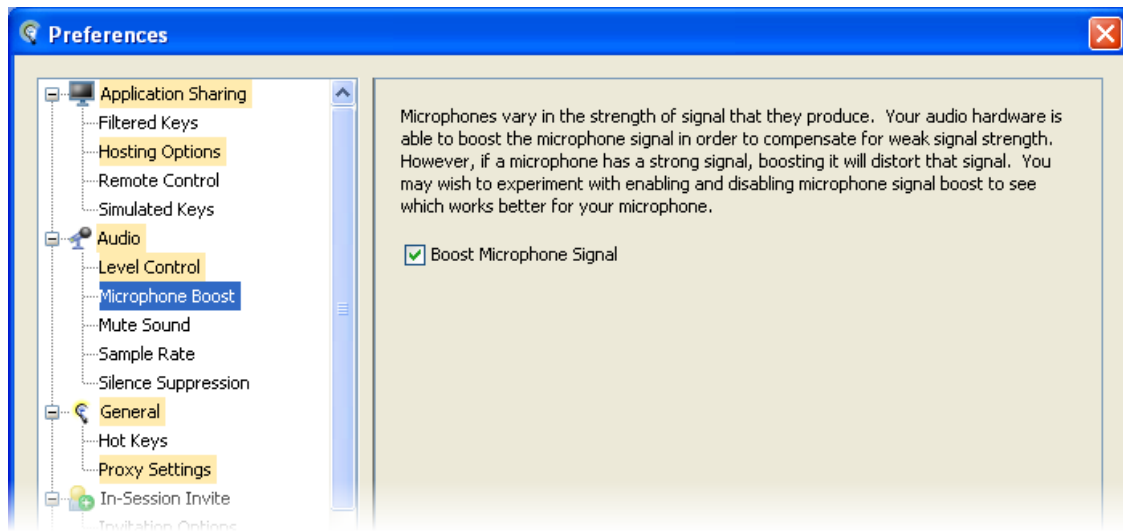
For guidelines on using the various connection speeds (including Wireless), refer to the following Knowledge Base article:

<http://support.elluminate.com/ics/support/default.asp?deptID=2653&task=knowledge&questionID=1107>

New Color Indicator for Unapplied Preferences

Yellow highlighting on a preference Panel in the Preferences list indicates there are changes to the Panel that have not yet been applied. The Module to which the Panel belongs also will be highlighted. For example, in the screen capture below, the Application Sharing Module is highlighted because its Hosting Options Panel has unapplied changes.

To clear highlighting from all Panels and Modules, click on **Apply**.





Changed Feature

Clip Art Library Tab

The “Illuminate” tab in the Clip Art Library has been renamed to “Application”.

