




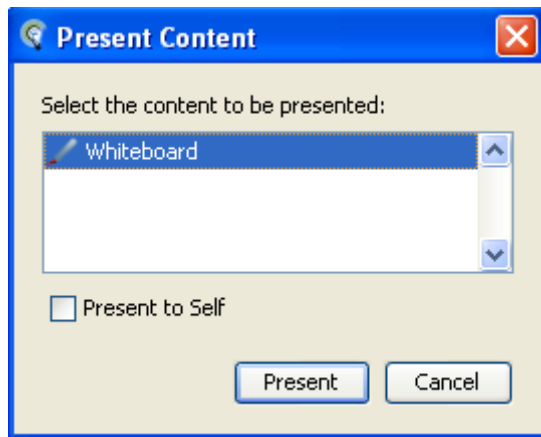
## Presentation Mode

### Quick Reference Guide for Moderators


As a Moderator, you can change the view of the Whiteboard or an Application Sharing window so it fills the entire Elluminate *Live!* window. This is called Presentation Mode. When you use Presentation Mode, everyone in the session automatically will have the same full-window view – until either they “opt out” or you end Presentation Mode and return the content to a normal view.

#### Displaying Whiteboard Content in Presentation Mode

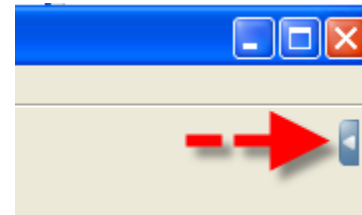
1. Open the Present Content dialog box by clicking the  Present Content button.
2. Select Whiteboard. If you wish your own view of the Whiteboard to be in Presentation Mode, select **Present to Self**.



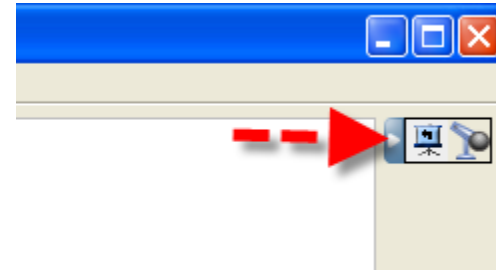
3. Click on the Present button.


4. To stop Presentation Mode, click the  terminate button.

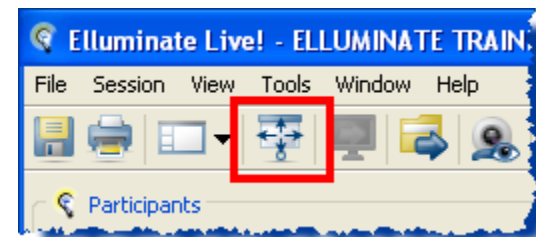
#### Presentation Mode View




To return to the default view or to activate your audio without exiting the Presentation Mode view, click the Controller Tab, which will appear in the upper right hand portion of the window. It will expand to display two buttons.

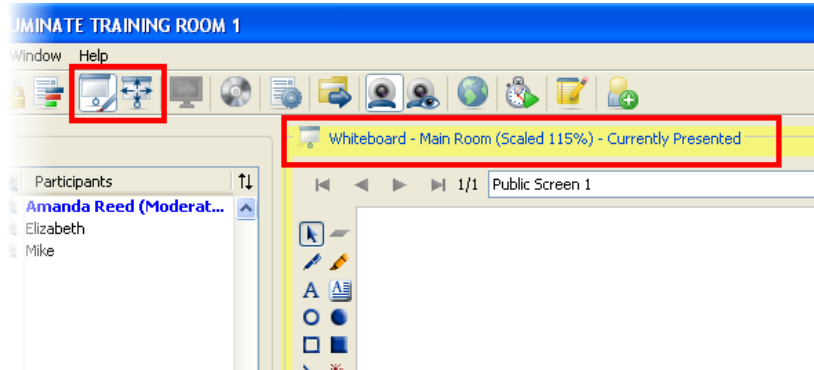


Click the  button to exit Presentation Mode and to “Return to non-presented layout.” The Participant can return to Presentation Mode by clicking the return button.

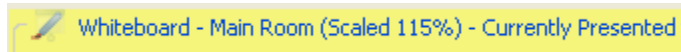


Click the  button to activate your microphone.

## Moderator View



If the Moderator does not select **Present to Self** and has their windows locked, the Whiteboard window will be surrounded by a yellow border containing text to indicate that it has been placed in Presentation Mode. There will also be an indicator in the bottom right-hand side of the Moderator's screen to confirm the Whiteboard is being show to Participants in Presentation Mode.



The Moderator can switch to the presentation view at anytime by clicking the




button.

## Displaying Application Sharing in Presentation Mode

You can put your Application Sharing window into Presentation Mode either through the Present Content dialog box or through the Host Applications dialog box. Application Sharing will appear in the Present Content dialog box only if an Application Sharing session has already been started.

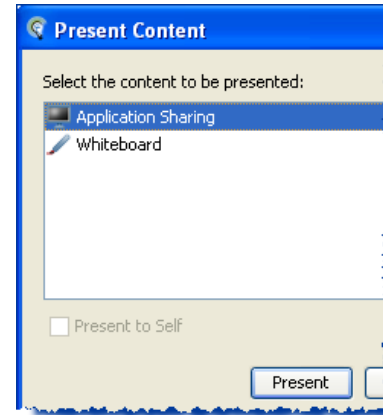
## Using the Present Content Dialog

1. Share your application through the Application Sharing dialog box.

2. Open the Present Content dialog box by clicking the Presentation Mode button .

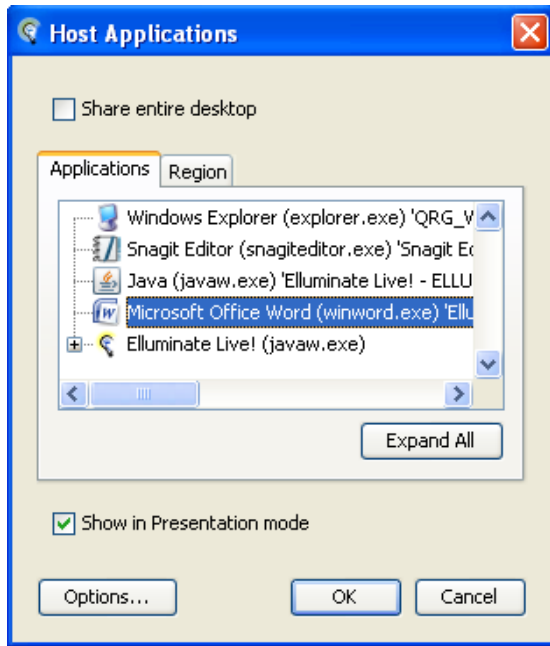
3. Select Application Sharing.



4. Click on the Present button.



## Using the Application Sharing Dialog

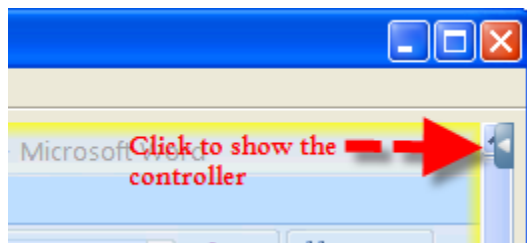
1. Open the Application Sharing dialog box.
2. Select the application or region you wish to share.
3. Select the **Show in Presentation mode** option.




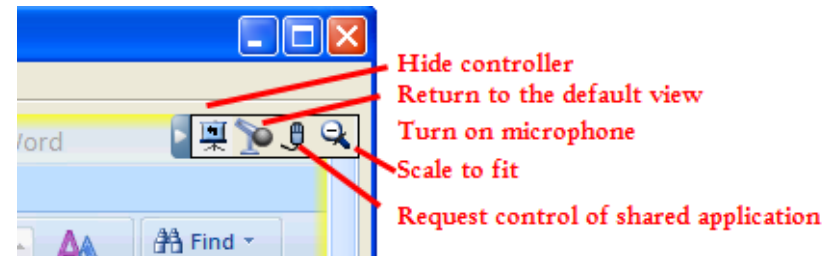
4. Click on the OK button.
5. To stop Presentation Mode but to continue Application Sharing click the  button. To stop Application Sharing click the  button.

### Displaying Application Sharing Session in Presentation Mode

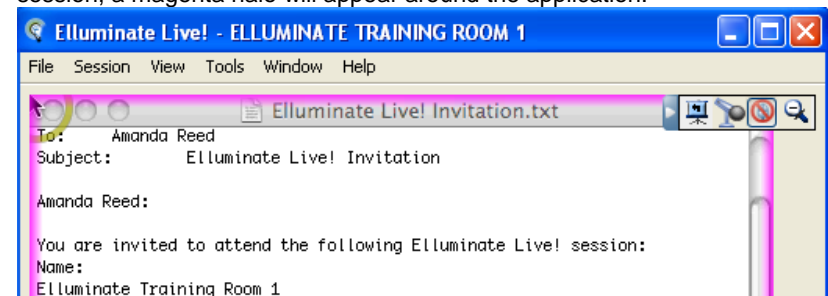
Viewers of an application sharing session in Presentation Mode will see the controller in the top right corner of the Presentation Mode window.



To show the controller, click on the  slider. The controller has buttons to let the viewer Talk, opt out of Presentation Mode, request remote control of the shared application and scale the window.



If you requested (and were granted) control of the application sharing session, a magenta halo will appear around the application.



### Mini-Controller

Participants can be moved in and out of Presentation Mode from the Mini-Controller by click the Presentation Mode button.

