



## What's New in Elluminate Live! V9.5

With the V9.5 release of Elluminate Live!, Elluminate's focus continues to be on providing best-in-class solutions for learning and collaboration that enhance the delivery of knowledge for exceptional outcomes across your global enterprise. Elluminate's enabling technology and "learning-edge" products take you beyond the virtual classroom to support the entire instructional cycle. This document is a summary of the new features and enhancements in Elluminate Live! V9.5.

### New and Improved User Interface

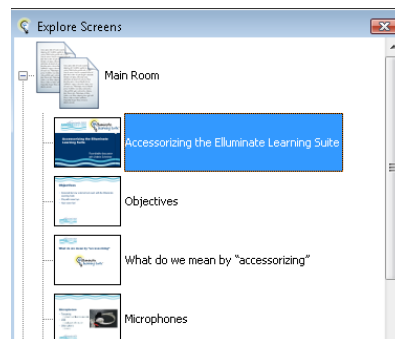
- Updated icons creating a fresh look
- Polling buttons are now located in the Participant window and the Quiz Manager button has been added to the main toolbar

### Audio and Video

- Improved audio fidelity and significantly reduced audio lag for high bandwidth users
- Near lip sync with video yet significantly reduced bandwidth requirements
- Much smoother frame rates and an increased default frame rate (now set at 10 fps)

### Whiteboard

- Text tool redesign making it easier to add content and to edit text
- A new clip art palette of Elluminate buttons and icons allowing users to load images onto the whiteboard for user help and to include in documentation
- The Screen Explorer now shows screens in text or as graphical images. In addition, whiteboard screens can easily be reordered using drag and drop functionality.
- Speaker notes in PowerPoint or OpenOffice presentations can be loaded into the Elluminate Live! Synchronized Notes tool



### Breakout Rooms

- A new copy screen panel allows moderators to easily select content from all or selected breakout rooms and copy the content into another room
- The distribution of users has two enhancements:
  - Using new drag and down functionality, attendees can be selected from the Participant window and moved to a new breakout room in one set.
  - Users can be given the permission to move from room to room. This is ideal for academic fairs, orientations where topics of interest can be hosted in each breakout room and participants can move through the rooms to learn at their own pace.

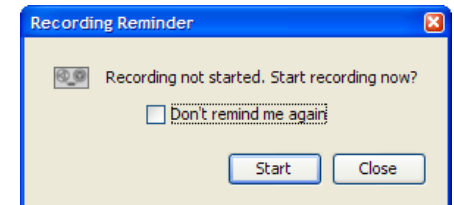
### Application Sharing

- Visual indicators are now provided to identify the shared area for the host by a colored border. A new option to "Emphasize Cursor" is available for the host of the shared application where the host's cursor will appear surrounded with a colored circle making it easier to follow.
- An access controller is available for the host of the shared applications to easily stop or pause sharing or to capture a screen shot.
- When viewing a shared application, the Application Sharing window can be resized and repositioned by each attendee. The shared application window can be moved to a second monitor as well.



### Recording

- The Elluminate session now provides a reminder to start the recording at the beginning of a session. When a moderator joins a session, a dialog box appears with a prompt to start the recording. An audible indicator is also provided when the recording starts and stops.
- Improved indexing in a recording showcasing the index marks and allowing users to easily fast forward and rewind the recording and to jump to a particular index marker in the recording.



### Other Enhancements

- Multimedia window now support the playback of WMV files.
- Multiple participants can be promoted to Moderator status simultaneously.
- Elluminate Live! supports the display of international dial-in numbers for both moderators and participants