



*No part of this document may be reproduced or transmitted in any form by any means, electronic or mechanical, including photocopy, recording or using any information retrieval system, without prior written permission. This document contains confidential proprietary information and is protected by law. This document and the information contained in it are intended for the original recipient(s) only. Any dissemination or distribution of the document without prior written permission is strictly prohibited.*

*Elluminate<sup>®</sup>, Elluminate Live!<sup>®</sup> and the Elluminate light bulb image and fonts are registered trademarks of Elluminate, Inc., all rights reserved.*

*Elluminate Plan!<sup>™</sup> is a trademark of Elluminate, Inc., all rights reserved.*

*Java, Java Runtime Environment, Java Web Start, Solaris and the Solaris logo are trademarks or registered trademarks of Sun Microsystems, Inc. in the U.S. or other countries.*

*Windows, Vista and PowerPoint are trademarks of Microsoft Corporation.*

*Mac, Macintosh, the Mac logo and OS X are trademarks of Apple Inc., registered in the U.S. and other countries.*

*SPARC and UltraSPARC are registered trademarks of SPARC International, Inc.*

*openSUSE is a trademark of Novell, Inc.*

*Ubuntu is a registered trademark of Canonical Ltd.*

*OpenOffice.org is a trademark held by Team OpenOffice.org e.V. on behalf of OpenOffice.org.*

*All other brand or product names are trademarks or registered trademarks of their respective companies or organizations.*

**© 2009 Elluminate, Inc. All Rights Reserved.**



# Contents

<b>Preface</b> .....	<b>ii</b>
Who should read this guide.....	ii
Conventions used in this guide .....	ii
Operating System Differences .....	ii
Notes .....	ii
Typographical conventions.....	iii
Contacting Elluminate Technical Support .....	iii
<b>Chapter 1 System Requirements</b> .....	<b>1</b>
Minimum Elluminate <i>Plan!</i> Requirements .....	1
Elluminate <i>Plan!</i> Limitations .....	2
Minimum Elluminate <i>Live!</i> Requirements.....	2
<b>Chapter 2 Installation</b> .....	<b>3</b>
Installing Elluminate <i>Plan!</i> .....	3
Uninstalling Elluminate <i>Plan!</i> .....	9
Windows .....	9
Macintosh .....	9
Linux and Solaris.....	9
<b>Chapter 3 Registration</b> .....	<b>10</b>
Entering your license key and registration information when you start .....	10
Entering your registration information from within the application .....	13

# Preface

---

---

## Who should read this guide

This guide is written for Elluminate *Plan!*<sup>TM</sup> users wanting to install and register Elluminate *Plan!*<sup>TM</sup>

## Conventions used in this guide

### *Operating System Differences*

This guide is written for Elluminate *Plan!* users on all supported operating systems: Windows, Mac OS X, Linux and Solaris.


### **Screen Captures**

The screen captures shown in this guide were taken in a Windows environment. If you are running Elluminate *Live!*<sup>®</sup> on a Mac, Solaris or Linux platform, the appearance of windows, dialog boxes, etc. will differ slightly from those shown in this guide.


### **Notes**

Four types of notes are used in this guide to highlight information:


---

 This is a note. Notes of this format are used to highlight important information or to present asides relevant to the topic at hand.

---

 This is a tip. Tips provide helpful information on how to most effectively use a particular function in Elluminate *Plan!* or Elluminate *Live!*

---

 This is a caution. Cautions alert you to potentially confusing terminology or difficulties that may occur when using Elluminate *Plan!* or Elluminate *Live!*

---



## Typographical conventions

Convention	Description
1. Number	Used to indicate a step in a task.
✓ Checkmark	Used for listing the different options available to you to complete a task or function. Pick one only.
<b>Bold</b>	Used to highlight clickable interface elements (such as buttons or tabs) or to give emphasis to a word.
<i>Italics</i>	Used to highlight options or parameters. Also used for cross references to other sections in this guide or to other guides.
<u>Underline</u>	Used to indicate links, such as links to websites.
Monospace	Used to highlight pathnames, filenames and folders.
<brackets>	Used to indicate variables.

## Contacting Elluminate Technical Support

Elluminate technical support is available through the following channels:

<b>Phone</b> (available 24x7)	Toll Free 1-866-388-8674 (select option 2) Additional phone numbers for international users are available on the Support Portal.
<b>Support Website</b>	<a href="http://www.illuminate.com/support">http://www.illuminate.com/support</a>
<b>Support Portal</b>	<a href="http://support.illuminate.com/">http://support.illuminate.com/</a>

*This page intentionally left blank*



# Chapter 1 System Requirements


---

Before you install Elluminate *Plan!*™, ensure that your computer meets the following system requirements.

## Minimum Elluminate *Plan!* Requirements

Elluminate *Plan!* can be installed on all supported Elluminate *Live!*® platforms: Windows, Linux, Solaris and Mac systems.

---

 Before you begin installation of Elluminate *Plan!*, ensure your computer is running Sun's Java 1.5 or higher as it is required by the installation software.<sup>1</sup> You can download it from Sun's Java website (<http://www.java.com/>) or Elluminate's Support website (<http://www.illuminate.com/support/>).

---

Your computer should meet or exceed the following minimum requirements:

### Windows

- Windows XP (32 bit) or Vista (32 or 64 bit)
- Pentium III 500 MHz processor
- 256 MB RAM
- 20 MB free disk space

### Mac

- Mac OS X 10.5
- G4, G5, or Intel processor
- 256 MB RAM
- 20 MB free disk space

### Solaris

- Solaris 10 SPARC
- UltraSPARC IIc 300 MHz
- 256 MB RAM
- 20 MB free disk space

---

<sup>1</sup> Java from a vendor other than Sun is not compatible with Elluminate *Plan!* and Elluminate *Live!*

## Novell Linux

- openSUSE 11 (64 bit)
- Pentium III 1 GHz processor
- 256 MB RAM
- 20 MB free disk space

## Ubuntu Linux

- Ubuntu Linux 8.10 (64 bit)
- Pentium III 1 GHz processor
- 256 MB RAM
- 20 MB free disk space

## Elluminate Plan! Limitations

For information on limitations, such as whiteboard file size limitations, consult your Elluminate *Live!* server administrator. You can view the default file size quotas in the Elluminate *Plan!* Session Plan Preferences dialog.



Do not change the quota values unless instructed to do so by Elluminate!

---

## Minimum Elluminate *Live!* Requirements

Session plans created in Elluminate *Plan!* 2.0 can be run on Windows, Macintosh, Linux and Solaris systems running the following:

- Elluminate *Live!* 9.5 or higher



Session plans created in Elluminate *Plan!* 2.0 (.elpx files) cannot be run in Elluminate *Live!* 8.5, 9.0 or 9.1. However, you **can** run Elluminate *Plan!* 1.0 session plans (.elp files) in Elluminate *Live!* 9.5.

---

- Sun's Java 1.5 or higher<sup>2</sup>



See Chapter 2 of the *Moderators' Guide* for a comprehensive listing of Elluminate *Live!* system requirements. You can find the guide on the following web page: <http://www.illuminate.com/support/docs/9.5/moderator.jsp>.

---

---

<sup>2</sup> Java from a vendor other than Sun will not be compatible with Elluminate *Plan!* and Elluminate *Live!* You can download Java from Sun's Java website (<http://www.java.com>) or Elluminate's Support website (<http://www.illuminate.com/support/>).




## Chapter 2 Installation


---

### Installing Elluminate *Plan!*

Download the Elluminate *Plan!* installation software for your specific platform from the Elluminate *Plan!* product download webpage: <http://www.illuminate.com/products/plan/plan2-info.jsp>.

---


 Be sure to also download the Elluminate *Plan!* User's Guide from the webpage. The document will not be accessible if you are not connected to the Internet – which may be the case when you are creating session plans.

 Version 2.0 of Elluminate *Plan!* may be installed over version 1.0. There is no need to uninstall 1.0 first.

---

To install Elluminate *Plan!*, follow the steps below.


---

 Each step below discusses a panel in the installer. Move between the panels by clicking the **Next >** button.

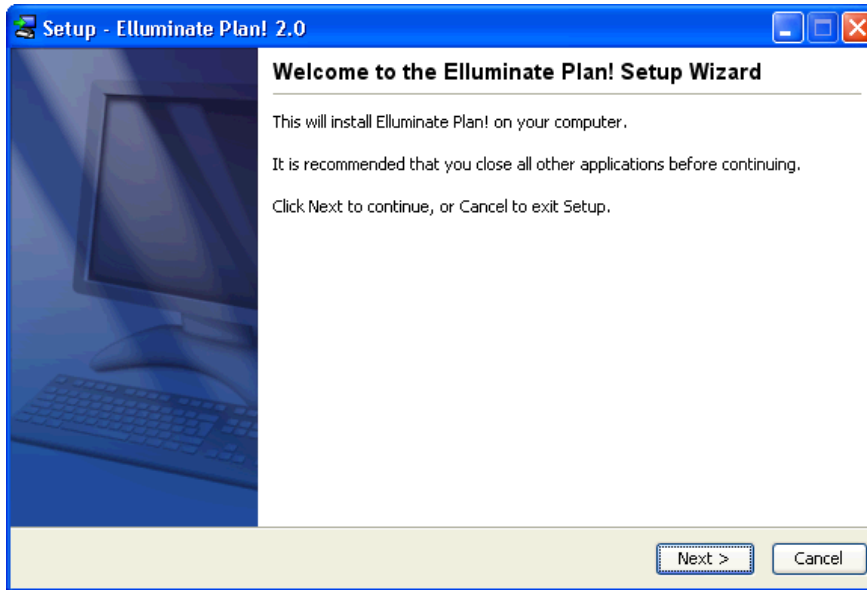
---

1. Click on the installer icon. The Welcome panel appears. (You don't need to do anything here, so continue to the next panel.)

---

 If you do not have Java installed on your system, you will get an error and will not be able to proceed with the installation. Download Java 1.5 or higher and start the installer again. (For details on downloading Java, refer to *Minimum Elluminate Live! Requirements* above.)


---



2. Read the license agreement and, if you agree to the terms, select *I accept the agreement*.



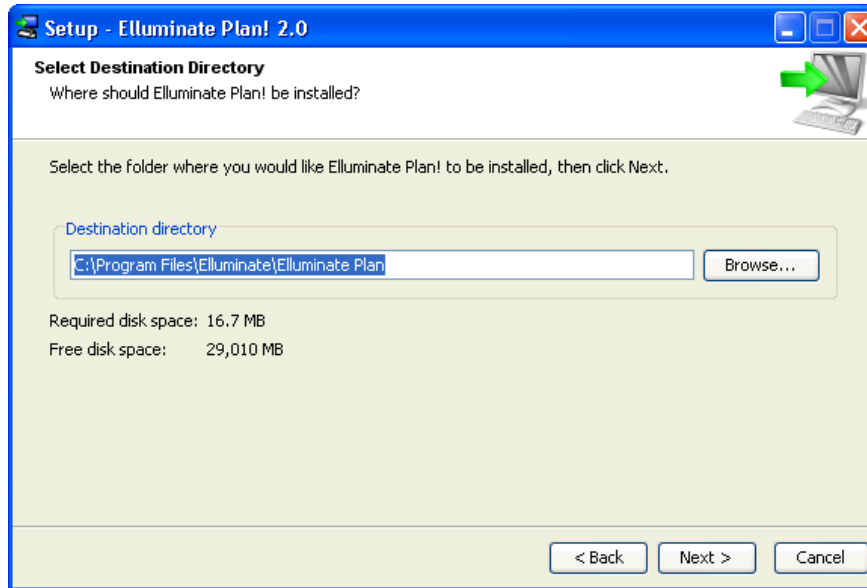
---

 If you do not accept the agreement, you will not be able to continue with the installation.


---



3. Specify into which directory you would like to install the Elluminate *Plan!* application and its library. Either accept the default directory or browse to and select a different directory.



---

 This panel lists the disk space required for Elluminate *Plan!* Make sure you specify a directory on a drive that has sufficient disk space.

---

The default installation locations are as follows:

Windows

C:\Program Files\Elluminate\Elluminate Plan

Mac

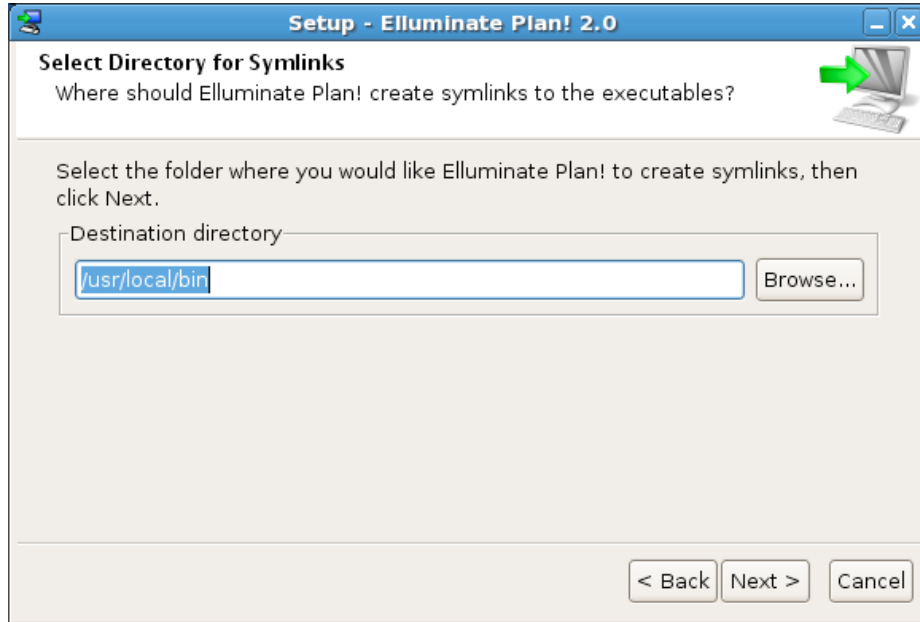
/Applications/Elluminate/Elluminate Plan

Linux/Solaris


Root Login: /opt/Elluminate/Elluminate\_Plan

Standard Login: /home/<user\_name>/Elluminate/Elluminate\_Plan

- (Linux/Solaris only) Specify into which directory you would like to install the symlinks.

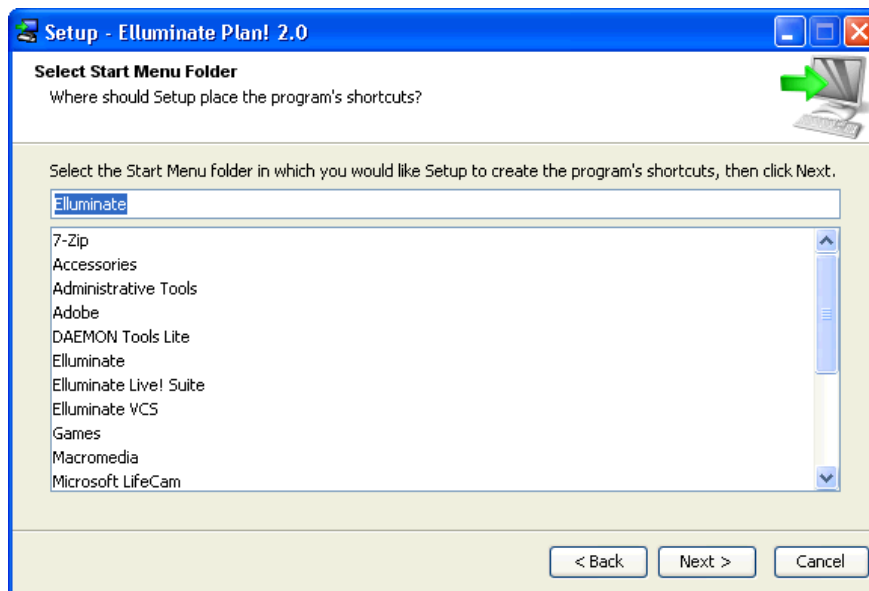


---

 Root users can use the default location (`/usr/local/bin`). However, standard users do not have write access to the default location and will have to choose a different directory.

---

- (Windows only) Specify into which Start Menu folder you would like to place the program shortcut for Elluminate *Plan!*



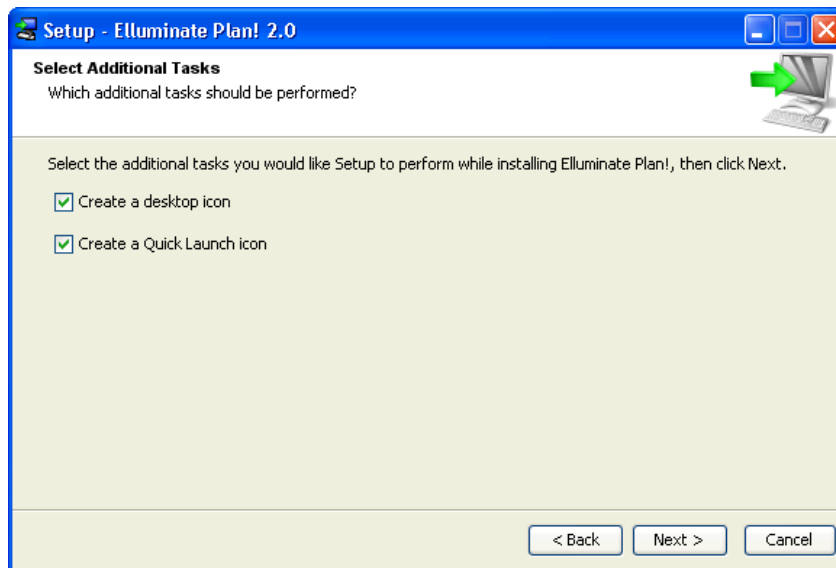


Select the name of a Start Menu folder by doing one of the following:

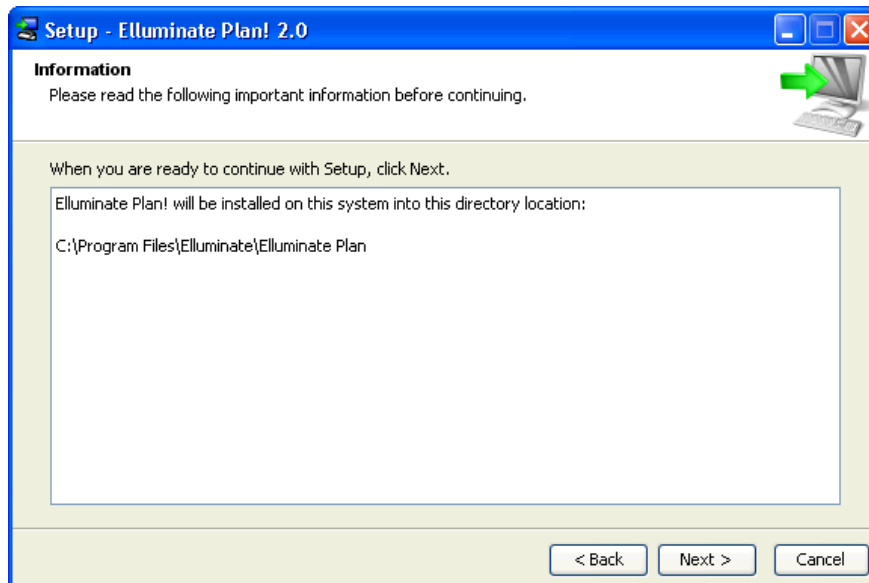
- ✓ Accept the default name selected (Elluminate).
- ✓ Enter a new folder name.
- ✓ Select a folder from the list provided.

A subfolder called Elluminate Plan! will be added under the folder you specify so, if you used the default, the shortcut's path will be Start > Programs > Elluminate > Elluminate Plan! > Elluminate Plan!

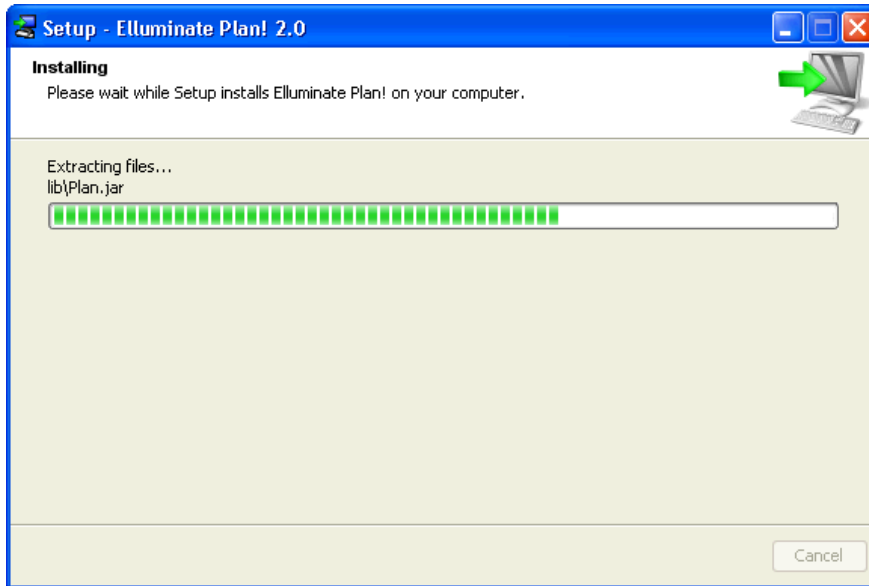
6. Specify whether or not you would like the installer to create an Elluminate *Plan!* icon on your desktop and, on Windows only, a Quick Launch icon in your Task Bar by selecting/deselecting the options.



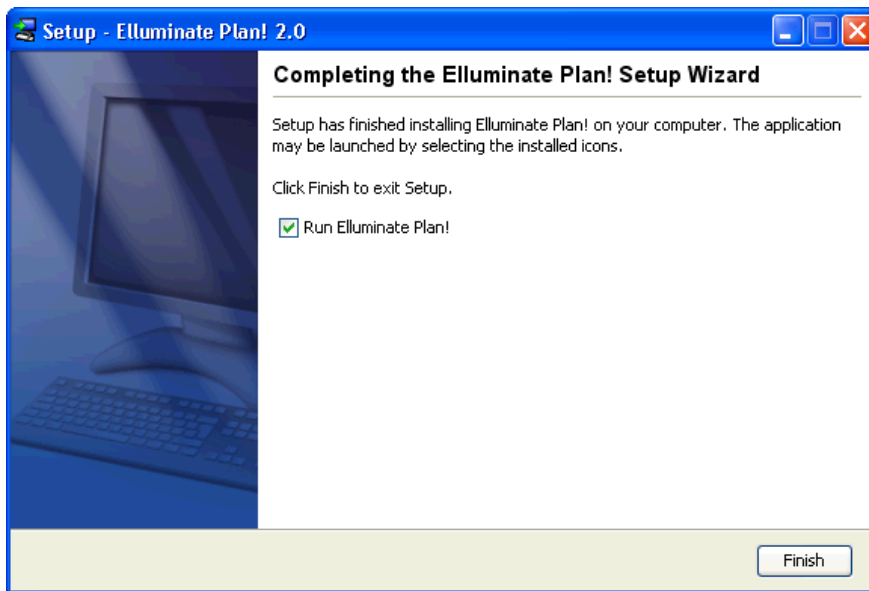
7. Read the Information panel to confirm the installation directory is correct.



8. Click **Next** > to start the installation process. The Installing panel will appear, showing the progress of your installation.



9. When installation is complete, the following panel is displayed. Select the option *Run Elluminate Plan!* if you would like to start the application immediately.



10. Click **Finish** to exit the installer.



## Uninstalling Elluminate *Plan!*

On all platforms, use the uninstallation application to remove Elluminate *Plan!* from your computer.

### **Windows**

On Windows, the uninstaller performs four tasks:

- Removes the application icon from your desktop.
- Deletes the application folder and its contents:  
`C:\Program Files\Elluminate\Elluminate Plan`
- Removes the Elluminate *Plan!* Start Menu items.
- Removes the Session Plan entries from the Windows Registry.

To uninstall Elluminate *Plan!*, launch the uninstaller in one of two ways:

- ✓ Select Start > Programs > Elluminate > Elluminate Plan! > Elluminate Plan! Uninstaller.
- ✓ Run the Elluminate *Plan!* Uninstaller executable file:

`C:\Program Files\Elluminate\Elluminate Plan\uninstall.exe`

Restart your computer to complete the uninstallation process.

### **Macintosh**

On the Mac, the uninstaller performs two tasks:

- Removes the application icon from your desktop.
- Deletes the application folder and its contents:  
`/Applications/Elluminate/Elluminate Plan`

To uninstall Elluminate *Plan!*, run the Elluminate *Plan!* Uninstaller executable file:

`/Applications/Elluminate/Elluminate Plan/Elluminate Plan! Uninstaller`

### **Linux and Solaris**

On Linux and Solaris, the uninstaller performs three tasks:

- Removes the application icon from your desktop.
- Deletes the application folder and its contents:  
Root Login: `/opt/Elluminate/Elluminate_Plan`  
Standard Login: `/home/<user_name>/Elluminate/Elluminate_Plan`
- Removes the symlinks.

To uninstall Elluminate *Plan!*, run the Elluminate *Plan!* Uninstaller executable file:

Root Login: `/opt/Elluminate/Elluminate_Plan/uninstall.sh`

Standard Login: `/home/<user_name>/Elluminate/Elluminate_Plan/uninstall.sh`


## Chapter 3 Registration

---

### Entering your license key and registration information when you start

The first time you launch Elluminate *Plan!* you will be prompted to enter your license key and registration information.

---


 **Registration is mandatory.** You may skip the registration process when first launching the product. However, if you do, you (or any other user on your computer) will be prompted to register each time you launch Elluminate *Plan!*, until registration is completed.

You also may register from within Elluminate *Plan!* by selecting Registration from the Help menu.

---

If you do not have a license key, contact your Elluminate system administrator who can provide it to you.<sup>3</sup>

---

 The license key can be opened only during the installation of Elluminate *Plan!* .

---

1. Launch Elluminate *Plan!* in one of the following ways:
  - ✓ Select the option *Run Elluminate Plan!* during the installation process.
  - ✓ Click on the Elluminate *Plan!* icon on your desktop.
  - ✓ (Windows only) Click on the Elluminate *Plan!* icon in your Quick Launch toolbar.
  - ✓ Run the Elluminate *Plan!* executable file:

#### Windows

`C:\Program Files\Elluminate\Elluminate Plan\Plan.exe`

#### Macintosh

`Applications/Elluminate/Elluminate Plan/Plan`

#### Linux/Solaris

Root Login: `/opt/Elluminate/Elluminate_Plan/Plan.sh`

Standard Login: `/home/<user_name>/Elluminate/Elluminate_Plan/Plan.sh`

---


<sup>3</sup> When Elluminate *Plan!* is purchased, Elluminate sends a license key file to your organization via email. The license key may be delivered via a zipped file, in which case you will need to unzip the file prior to use.



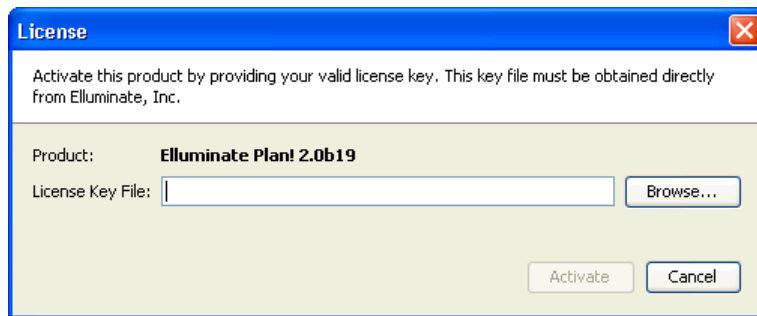
- ✓ (Windows only) Navigate to and select the Start Menu shortcut. If you chose the default for your shortcut, select Start > Programs > Elluminate > Elluminate Plan! > Elluminate Plan!

The License Key panel appears.

---


 If you are upgrading from Elluminate *Plan!* version 1.0, your existing license key will be used by Elluminate *Plan!* 2.0 and you will **not** be prompted for a license key.<sup>4</sup> However, you will be taken through the registration process again.

---



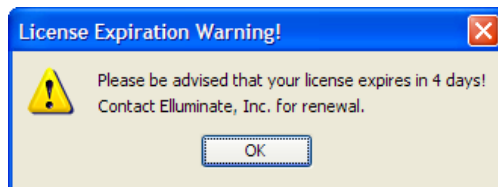
2. Select and activate your license key file in one of the following ways:
  - ✓ Browse to the file and click on **Activate**.
  - ✓ Drag and drop the file into the License window and click on **Activate**.

---


 Be sure your license key file is first extracted from the zip file.

---

If your license key is within 30 days of expiring, a dialog box will open, indicating how many days are left before your license key expires.




---

 To obtain a new license key for Elluminate *Plan!*, contact your Elluminate system administrator.

---

3. The registration form opens. Enter your registration information.

---

 If you are upgrading from Elluminate *Plan!* version 1.0, you will be prompted to update your existing registration information.

---

---

<sup>4</sup> If your license key is within 30 days of expiring, a dialog box will open, indicating how many days are left before your license key expires.

**Registration**

You must register this product to facilitate technical support and ensure that you are informed of future product information.

Fields marked with an \* are required.

Product: **Elluminate Plan! 2.0b19**

\* **First Name:** Required

\* **Last Name:** Required

\* **Email Address:** Required

Organization:

Role:

Phone Number:

Street Address:

\* **City:** Required

\* **State/Province/Region:** Alabama

\* **Country:** United States

Zip/Postal Code:

Contact me for:  Technical information and updates  
 Other information and offers

[Display the Elluminate Privacy Policy in the default browser](#)

I have read and accept the Elluminate Privacy Policy

Clear Register Skip

You have two options:

- ✓ Postpone the registration process until next time you launch Elluminate *Plan!* by clicking on **Skip**.
- ✓ Complete the registration form.
  - a. Enter information about yourself and your organization.



---

All fields marked with an asterisk (\*) are mandatory: *First Name, Last Name, Email Address, City, State/Province/County/Region and Country*.

---



---

The country field is read from your system settings and should already be filled in automatically. If it is not, and you are **not** from the United States, select your *Country* before attempting to select your *State/Province/County/Region*.

---

- b. Select the desired contact options:
  - *Technical information and updates:* if you select this option, you will be placed on Elluminate’s technical mailing list and receive information such as tips on using Elluminate *Plan!* (and Elluminate’s other products) and information on the availability of Elluminate *Plan!* upgrades.



- *Other information and offers:* if you select this option, you will be placed on an Elluminate mailing list and receive Elluminate’s semi-monthly newsletter *Newsline*, as well as occasional email promotions.
- c. Click on the link to display the Elluminate Privacy Policy, read the Privacy Policy and select the option *I have read and accept the Elluminate Privacy Policy*.



To complete registration, you **must** select this option. If you do not, the **Register** button will be disabled.

---

4. When you have completed the registration form, you have three options:
  - ✓ Click on **Register**. The Elluminate *Plan!* application is launched.
  - ✓ Click on **Clear**. This will remove all the information you entered in the fields, allowing you to start over. Return to step 3.
  - ✓ Click on **Skip**. The Elluminate *Plan!* application is launched. You will have to complete registration later.

## Entering your registration information from within the application

If you skipped registration during the installation process, or you want to edit your existing registration information, you can access the registration form from within the application.

From the Help menu, select Registration and then follow the steps outlined in *Entering your license key and registration information when you start* starting on page 10 (beginning with step 3).



If you are editing existing registration information, please note you cannot edit the email address field. If you have changed your email address, please contact your Elluminate system administrator.<sup>5</sup>

---

---

<sup>5</sup> Your system administrator will need to contact your Elluminate sales representative to have this field changed.