


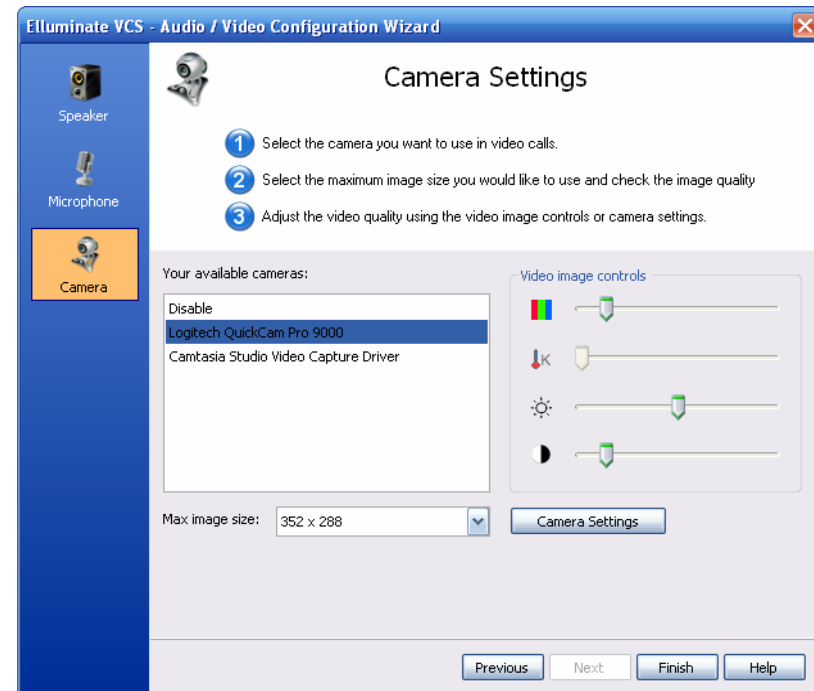


## Video Setup

After your initial installation of Elluminate VCS, you will be prompted to setup your video and audio. This is important to complete prior to joining an Elluminate VCS call. This setup can also be done at any time from the Main Menu in the Elluminate VCS client.

### Selecting a Camera

1. From the Elluminate VCS client, click the **Main Menu** button (  ) and select **Setup Video and Audio...**
2. Click on the **Camera** button on the left-hand side.
3. From **Your available cameras**, select the desired camera.
4. Once selected, the camera is activated and a preview of the video image appears.
5. Click the **Max image size** dropdown box to change the video image size.
  - Some of the image sizes might be labeled with "Slow frame rate." Your video is not transmitted in the best quality if you select this type of resolution.
6. Use the slider **Video image controls** to adjust color intensity, hue, contrast, and brightness of the video image.



7. Click the **Camera Settings** button to open the **Properties** dialog box for your cameras drivers, the available options will differ depending on your camera.  
**Note:** See the owner's manual for the camera to select the appropriate **Camera Settings**
8. Click **OK** to exit or **Apply** to remain in the **Camera Settings** dialog box.
9. Click the **Finish** button to exit the **Audio / Video Configuration Wizard**.